

# Gretsch type eylets ,how to install



You want to install a eylet in the "Gretsch" way .  
This works with any kind of eylets and badges.  
This eylets are for sale in the hardwarepage.  
Here is the instruction



What we need this 4mm socket for the"Gretsch" Eylet or a 5mm for our 10mm"Sonor" eylets.  
These parts you can find in every cheap wrench socket set



This shows the 5mm version with a Sonor 10mm eylet  
With washers you can adjust how deep you will cut the eylet but you can see that later



Put the eylet on the socket like this.

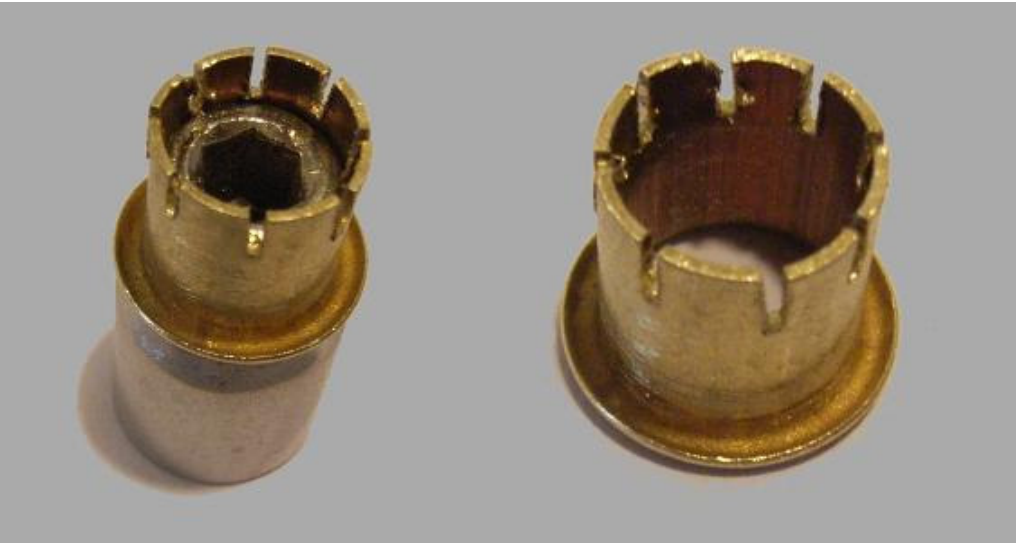


This shows the Sonor eylet on top of that 5mm tool with a washer.

More washers decrease the deepness of the cuts.



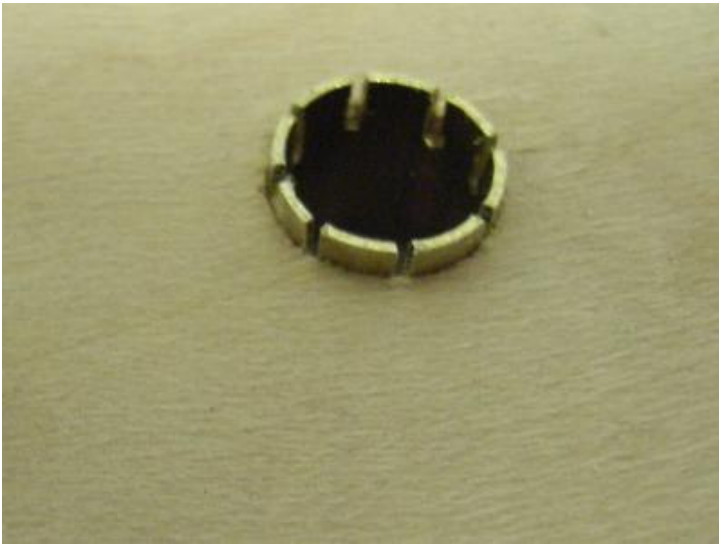
Fix it in a vice and use a metalsaw to cut 4 times .



You will get this out.



Put it in the badge.



Put the badge on the shell and it looks like this.



Use a metal ball and hit the ball with a hammer.





That is the look when you use the ball and the hammer.

Now use the hammer without the ball.



Looks like This



Not a Gretsch  
badge but that  
doesnt matter